

Newly Renovated • Restaurant • Residential • Retail For Lease



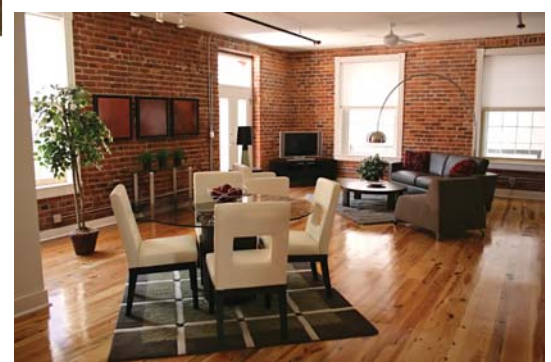
Haxall View

2101 East Main Street
Richmond, VA 23219

21,500 square feet available in multiple configurations

"Mixed-use" has never been so mixed. With office space, apartments, retail and restaurant all under one roof, Haxall View gives luxury downtown working and living a whole new meaning. Fulton Hill Properties turned this former cigar factory in the Edgeworth Tobacco warehouse complex into a stunning historical rehabilitation. Conveniently located at 2101 E. Main, Haxall View is within walking distance of the James River, Richmond's Canal Walk, grocers, pharmacy and some of Richmond's finest dining and nightlife.

- Located in a beautiful setting and on Richmond's most important street for business, Haxall View offers high ceilings, exposed brick and courtyards for office and retail spaces.
- Executives and employees can enjoy lunch breaks walking to the James River and along the historic Canal Walk.
- Lower level parking, ability to use outdoor patios with a fountain, and street level frontage all make for a successful urban restaurant.
- Property includes 17 loft apartments. Proximity to residential tenants ensures an immediate need for retail.
- Great signage potential.
- Elevated and ground floor outdoor patios with breathtaking views.
- State-of-the-art fitness room.



Top: Expansive landscaped courtyard with fountain and potential outdoor seating.

Inset: One of the residential lofts inside Haxall View.

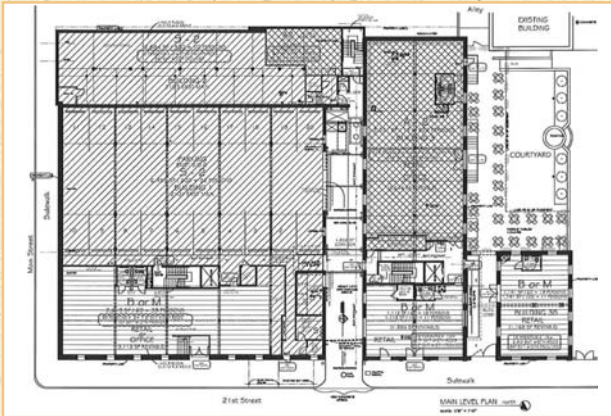


Fulton Hill
PROPERTIES

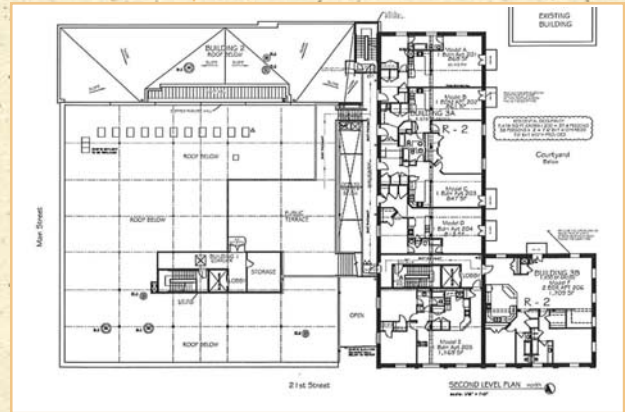
Find out what we can do for you!
Call (804) 226-9555 or email
info@haxallview.com

Newly Renovated • Restaurant • Residential • Retail For Lease

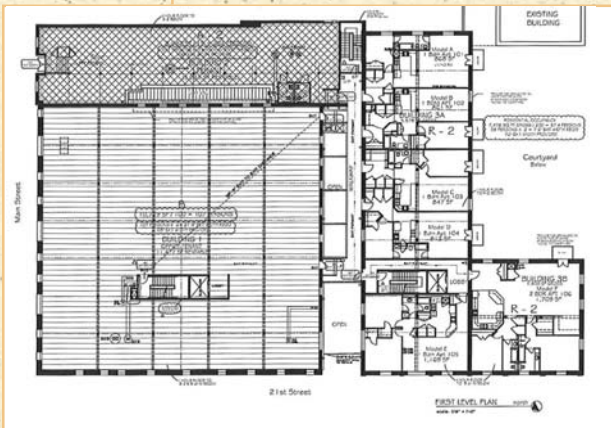
Main Level Retail, Restaurant & commercial



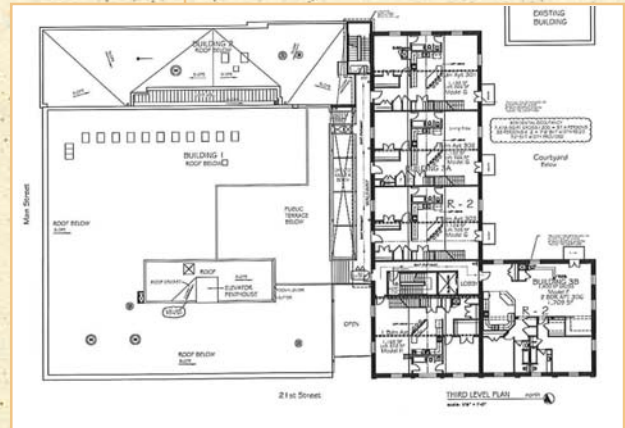
2nd Level Commercial and Residential



1st Level Commercial and residential



3rd Level Residential space, access to rooftop deck



Fulton Hill Properties turned this former cigar factory in the Edgeworth Tobacco warehouse complex into a stunning historical rehabilitation. Conveniently located at 2101 E. Main, Haxall View is within walking distance of the James River, Richmond's Canal Walk, grocers, pharmacy and some of Richmond's finest dining and nightlife.

- Restaurant and Retail space – 3,000 to 4,000 square feet
- Commercial space – fully leased
- Residential space – 17 loft apartments with one- and two-bedroom configurations



Fulton Hill PROPERTIES

Find out what we can do for you!
Call (804) 226-9555 or email
info@haxallview.com