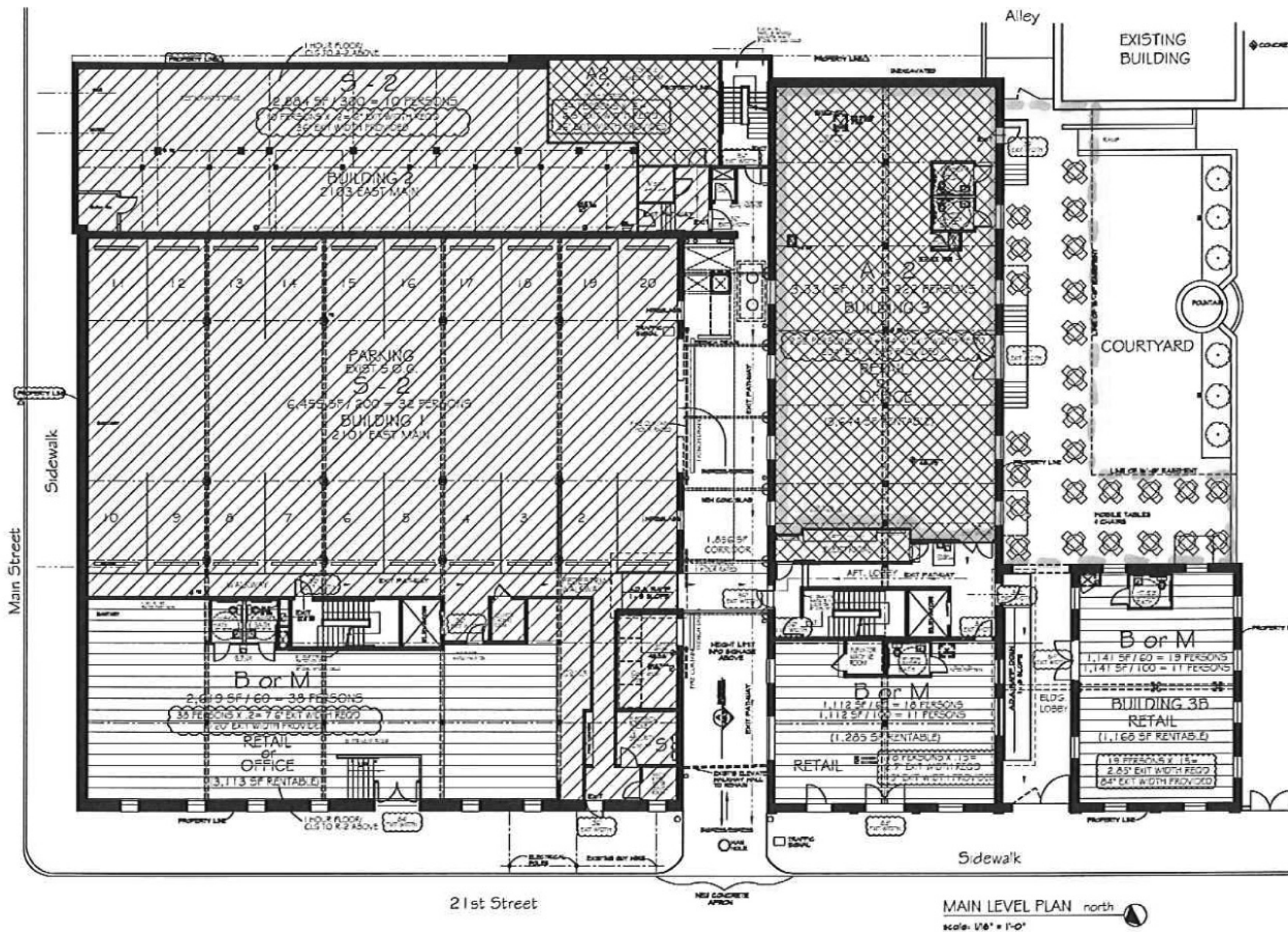


Main Level Retail, Restaurant & commercial



**Fulton Hill Properties** turned this former cigar factory in the Edgeworth Tobacco warehouse complex into a stunning historical rehabilitation. Conveniently located at 2101 E. Main, Haxall View is within walking distance of the James River, Richmond's Canal Walk, grocers, pharmacy and some of Richmond's finest dining and nightlife.

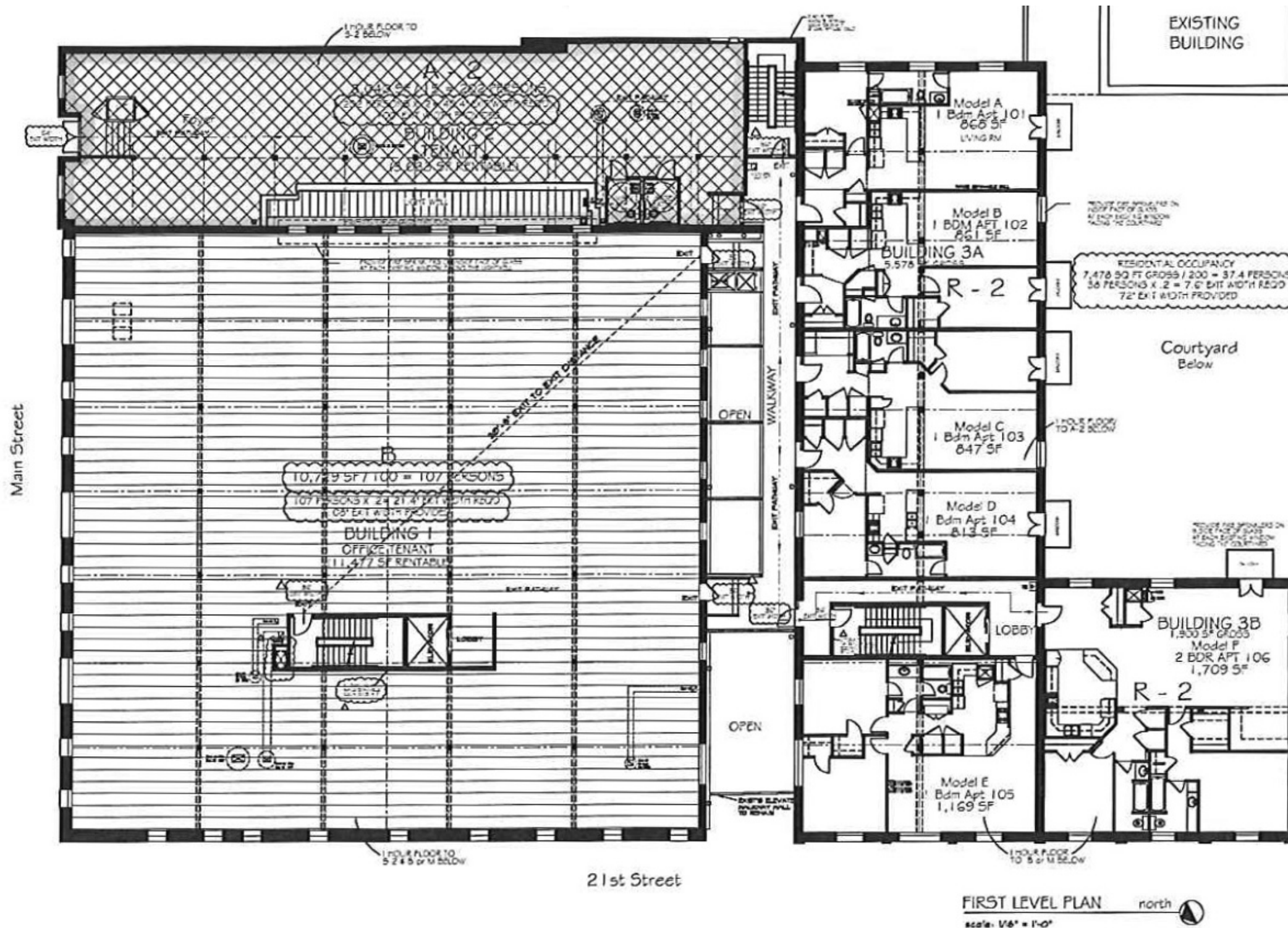
- Restaurant and Retail space with patio; 3,000 to 4,000 square feet available
- Office space – fully leased
- Residential space – 17 loft apartments with one- and two-bedroom configurations



**Fulton Hill**  
PROPERTIES

Find out what we can do for you!  
Call (804) 226-9555 or email  
[info@haxallview.com](mailto:info@haxallview.com)

1st Level Commercial and residential



**Fulton Hill Properties** turned this former cigar factory in the Edgeworth Tobacco warehouse complex into a stunning historical rehabilitation. Conveniently located at 2101 E. Main, Haxall View is within walking distance of the James River, Richmond's Canal Walk, grocers, pharmacy and some of Richmond's finest dining and nightlife.

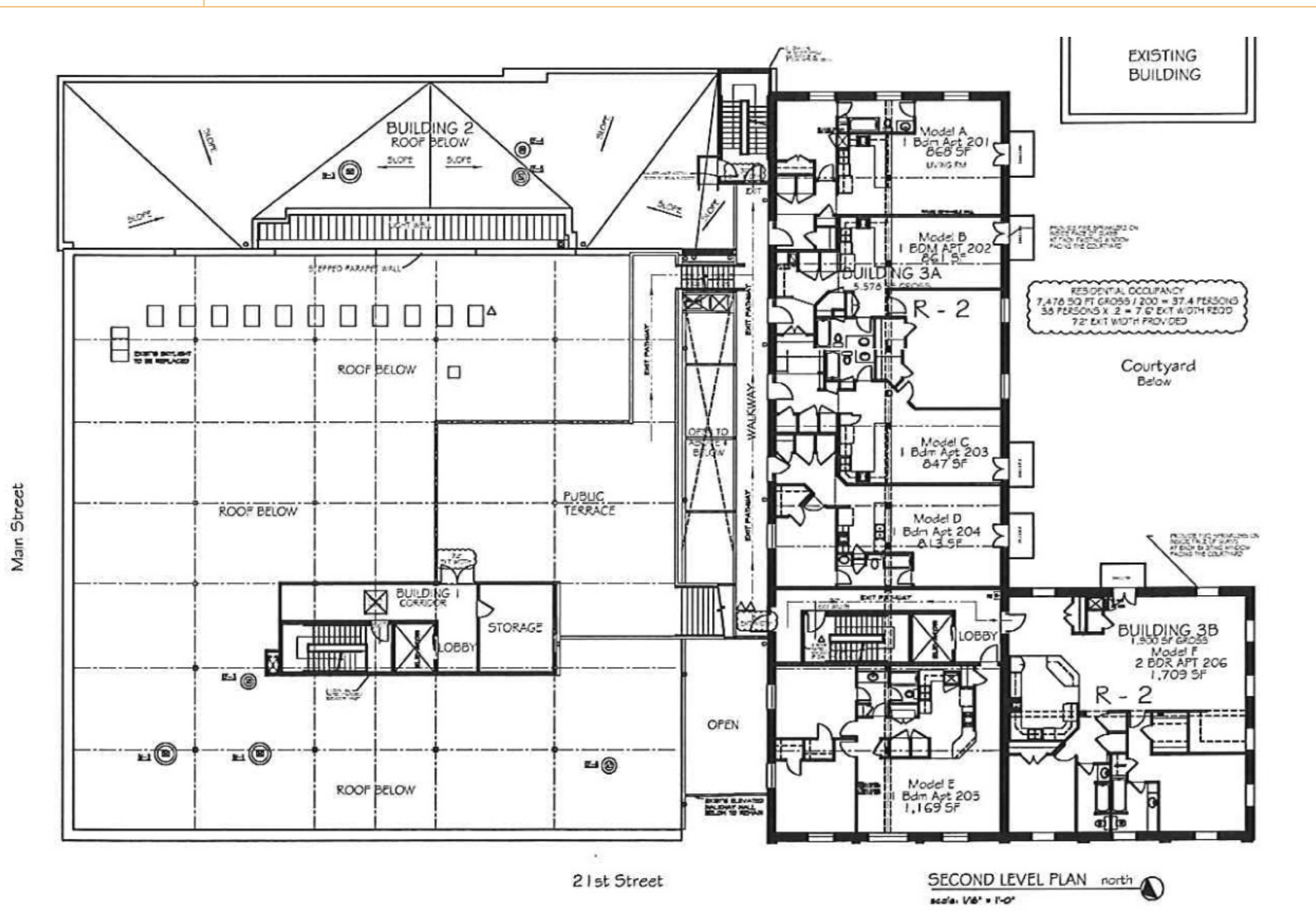
- Commercial space – fully leased
- Residential space – 17 loft apartments with one- and two-bedroom configurations available
- Convenient parking available on-site



**Fulton Hill**  
PROPERTIES

Find out what we can do for you!  
Call (804) 226-9555 or email  
info@haxallview.com

2nd Level Commercial and Residential



**Fulton Hill Properties** turned this former cigar factory in the Edgeworth Tobacco warehouse complex into a stunning historical rehabilitation. Conveniently located at 2101 E. Main, Haxall View is within walking distance of the James River, Richmond's Canal Walk, grocers, pharmacy and some of Richmond's finest dining and nightlife.

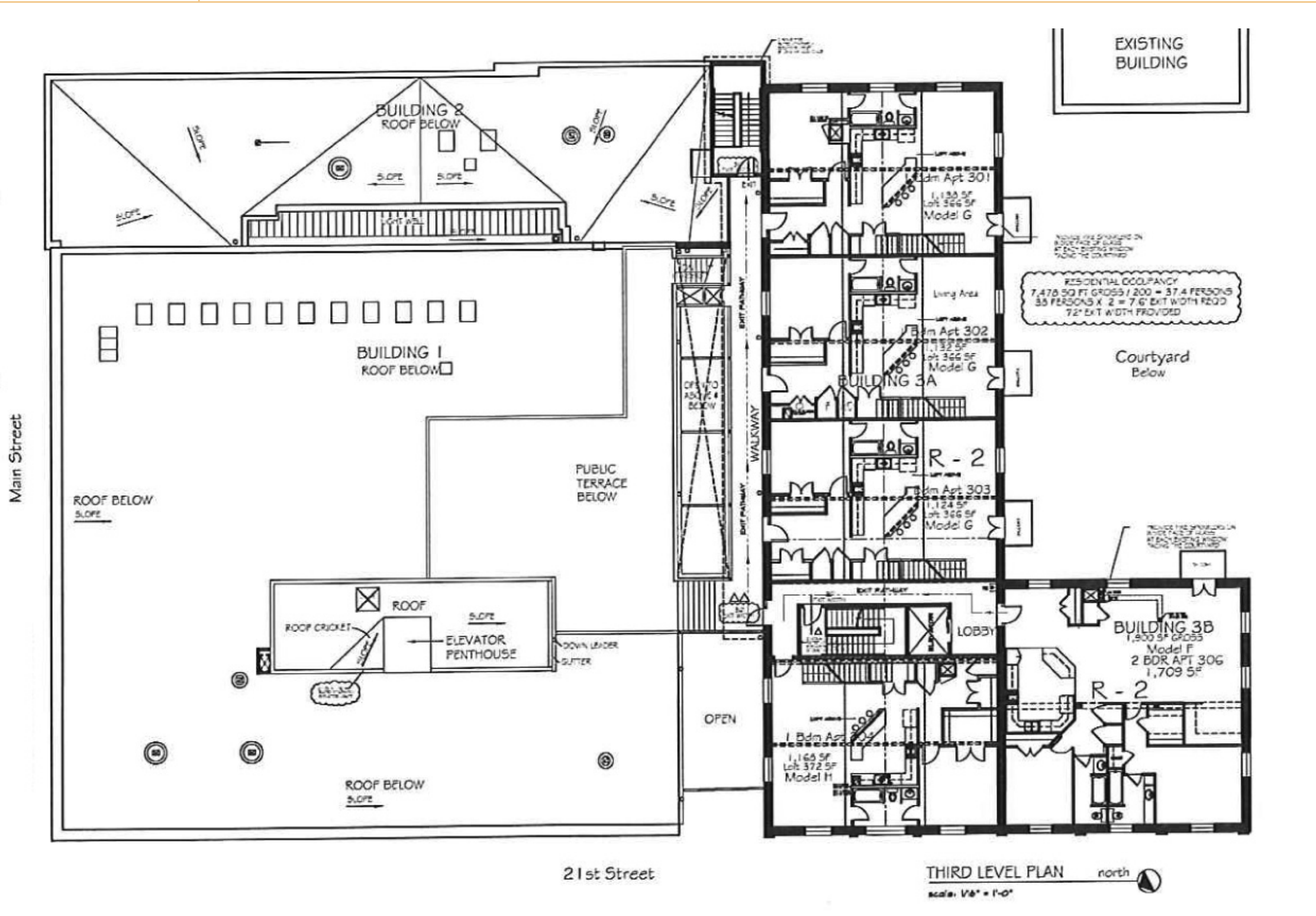
- Commercial space – fully leased
- Residential space – 17 loft apartments with one- and two-bedroom configurations available
- Convenient parking available on-site



**Fulton Hill**  
PROPERTIES

Find out what we can do for you!  
Call (804) 226-9555 or email  
info@haxallview.com

**3rd Level** Residential space, access to rooftop deck



**Fulton Hill Properties** turned this former cigar factory in the Edgeworth Tobacco warehouse complex into a stunning historical rehabilitation. Conveniently located at 2101 E. Main, Haxall View is within walking distance of the James River, Richmond's Canal Walk, grocers, pharmacy and some of Richmond's finest dining and nightlife.

- Residential space – 17 loft apartments with one- and two-bedroom configurations available
- Convenient parking available on-site



**Fulton Hill**  
PROPERTIES

Find out what we can do for you!  
Call (804) 226-9555 or email  
info@haxallview.com